



I-26 and SC 27 Interchange Improvements

Public Hearing



What is the purpose of the Public Hearing?

- Fulfill the requirements of NEPA
- Present and explain the Proposed Preferred Alternative
- Receive public input



Project Limits and Purpose

- Improve traffic operations and increase capacity along the corridor
- Improve the roadway and bridges to new design and safety standards
- Reduce congestion

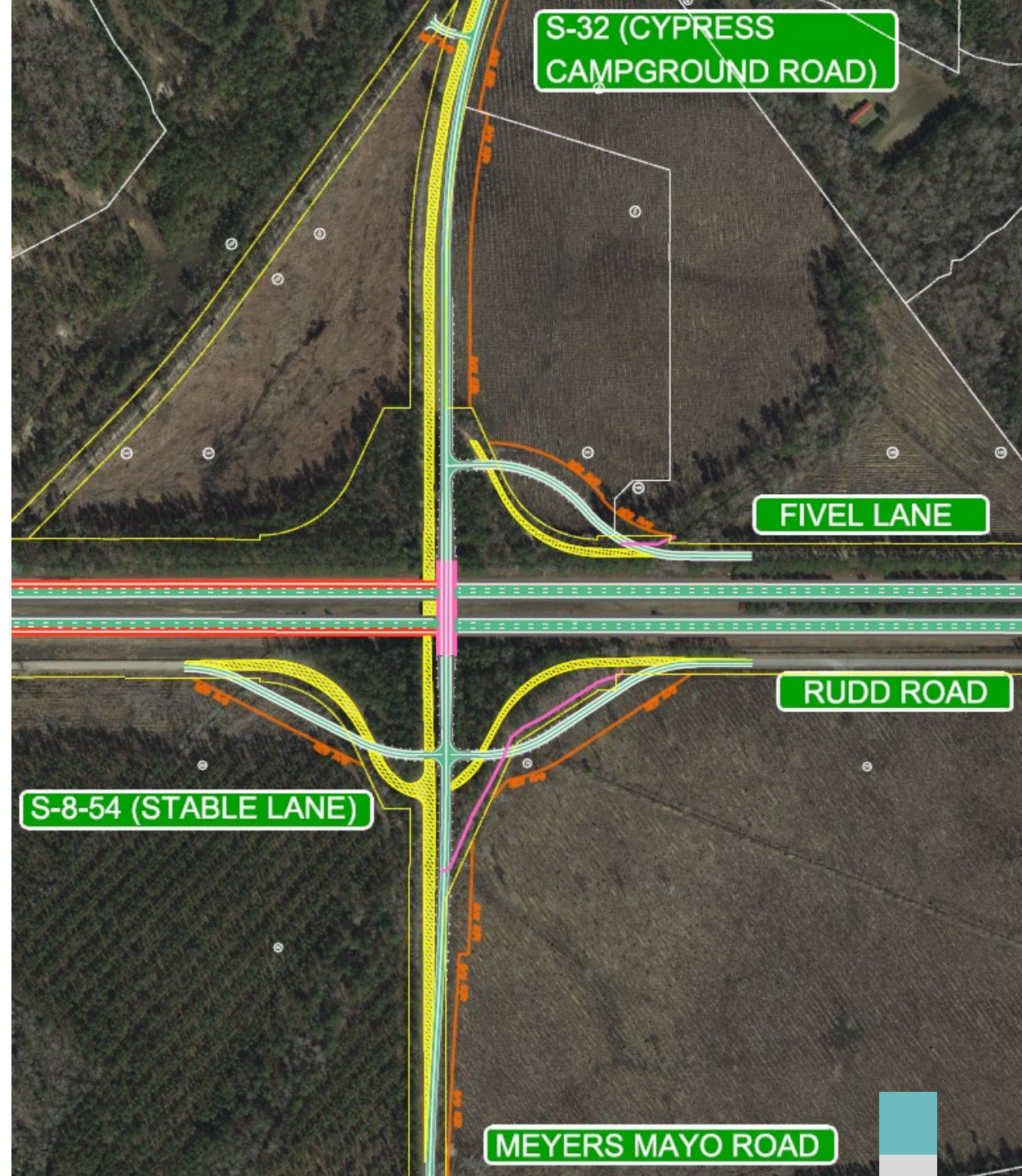


What alternatives were studied?

- No-Build Alternative
- Alternative 1 – Rural Diamond Interchange
- Alternative 2 – Partial Cloverleaf
- Alternative 3 – Diamond Roundabout – **PREFERRED**

Cypress Campground Road Bridge Replacement

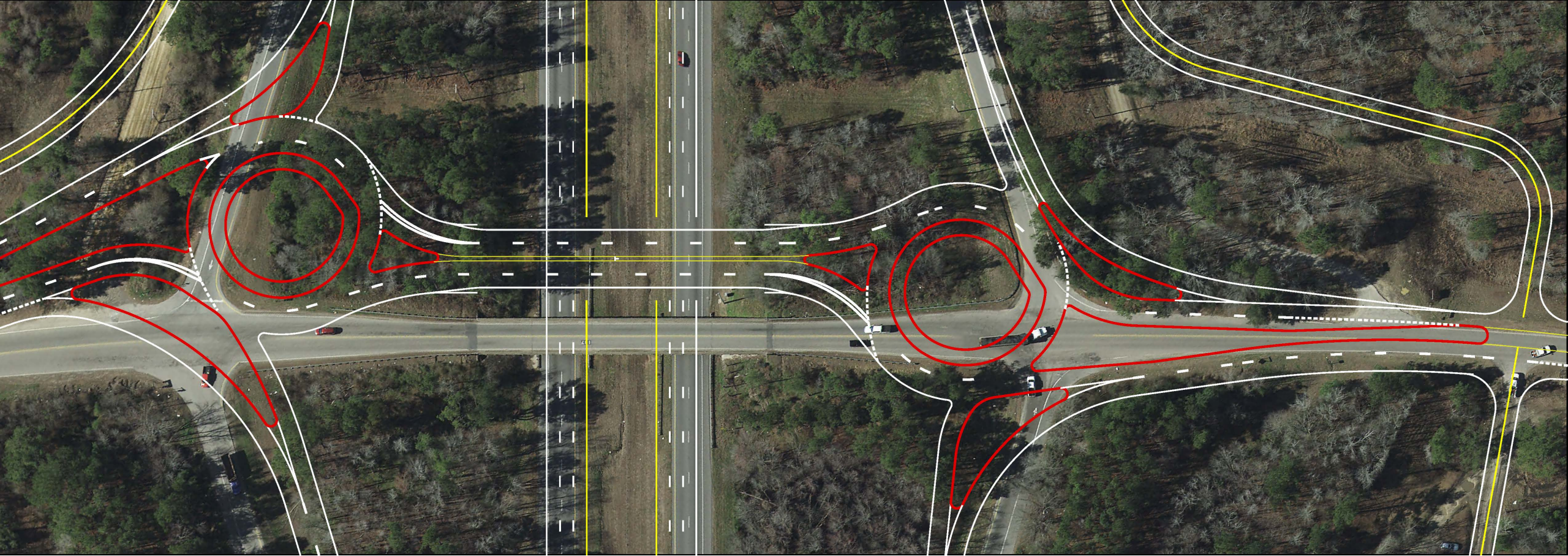
- Two Alternatives for replacement:
 - Along existing alignment – **REJECTED**
 - Along an offset alignment – **PREFERRED**



The Preferred Alternative

Alternative 3 – Diamond Roundabout

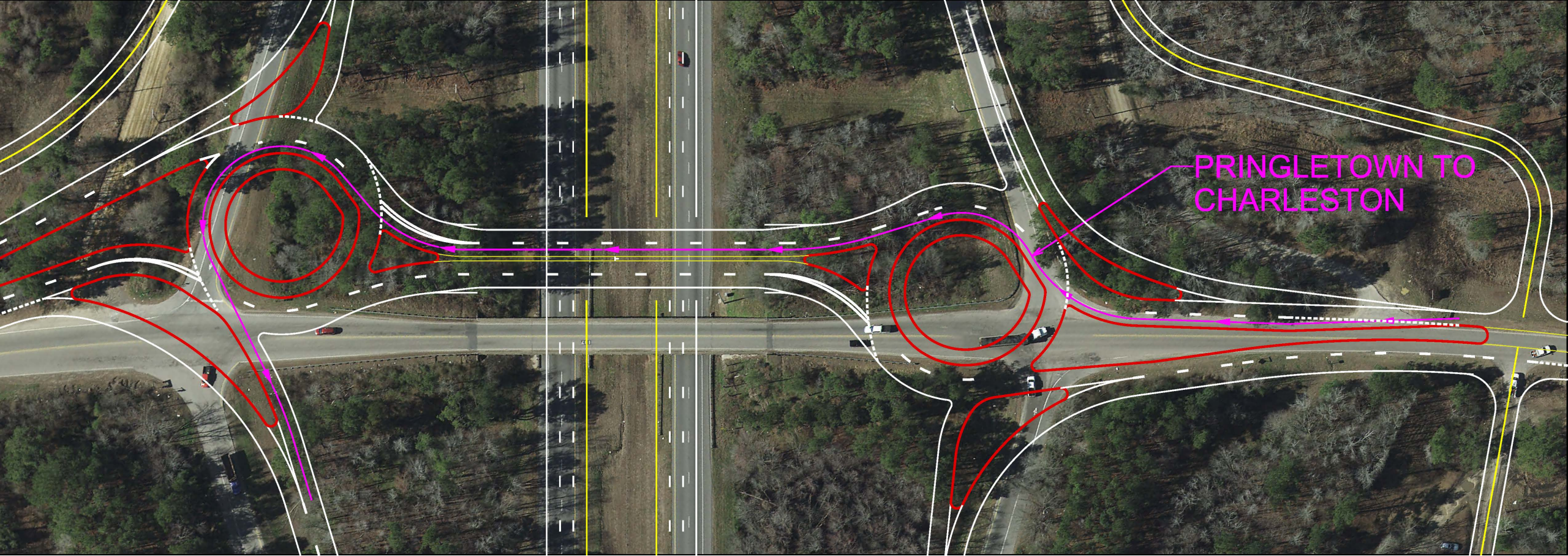




SC 27 and I-26 Travel Patterns

Roundabout Movements

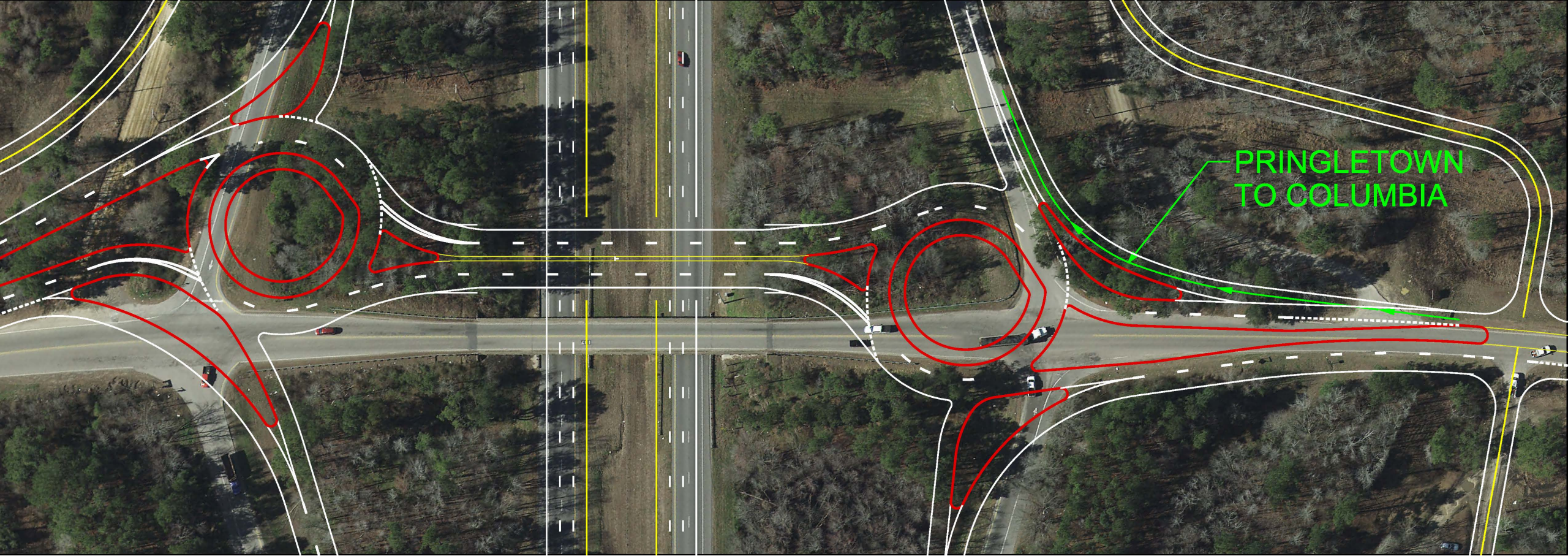




Pringletown to Charleston

Roundabout Movements

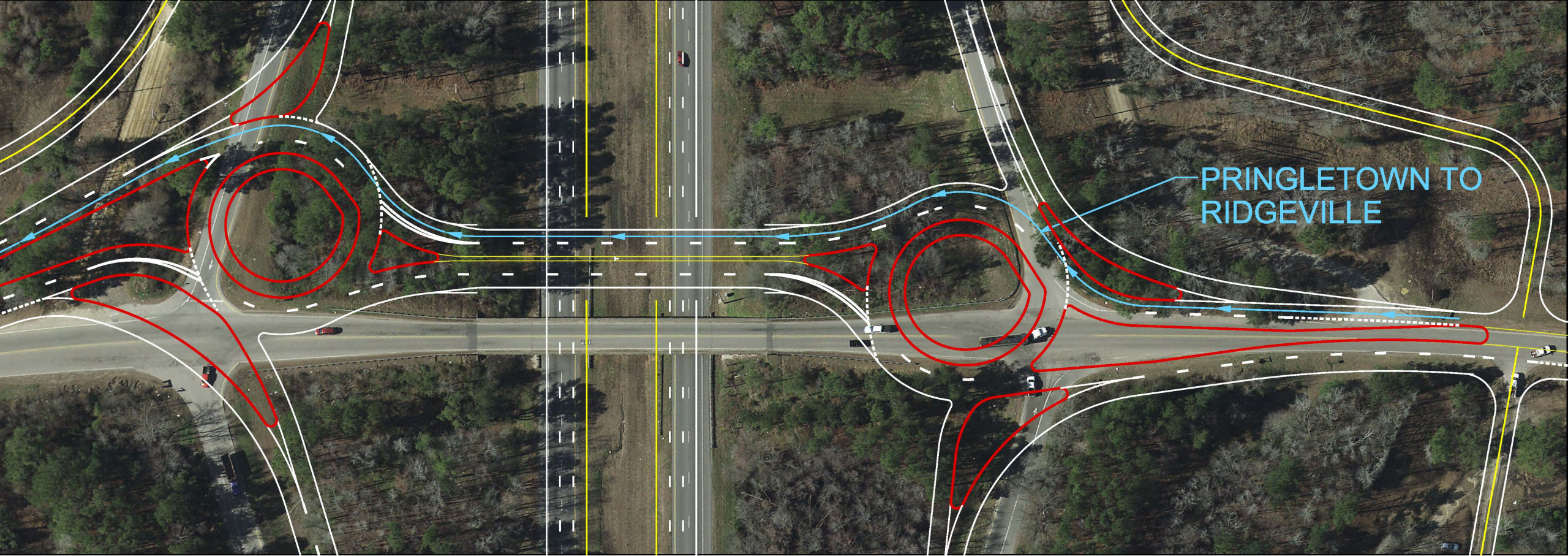




Pringletown to Columbia

Roundabout Movements



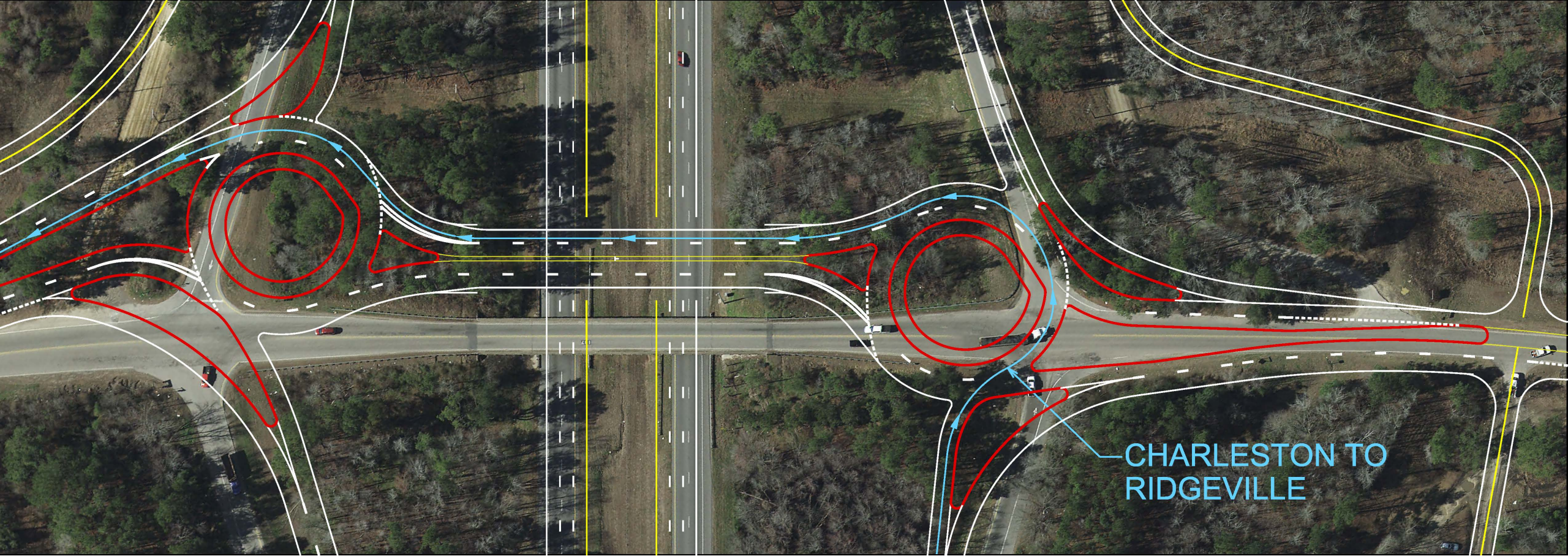


PRINGLETOWN TO
RIDGEVILLE

Pringletown to Ridgeville

Roundabout Movements

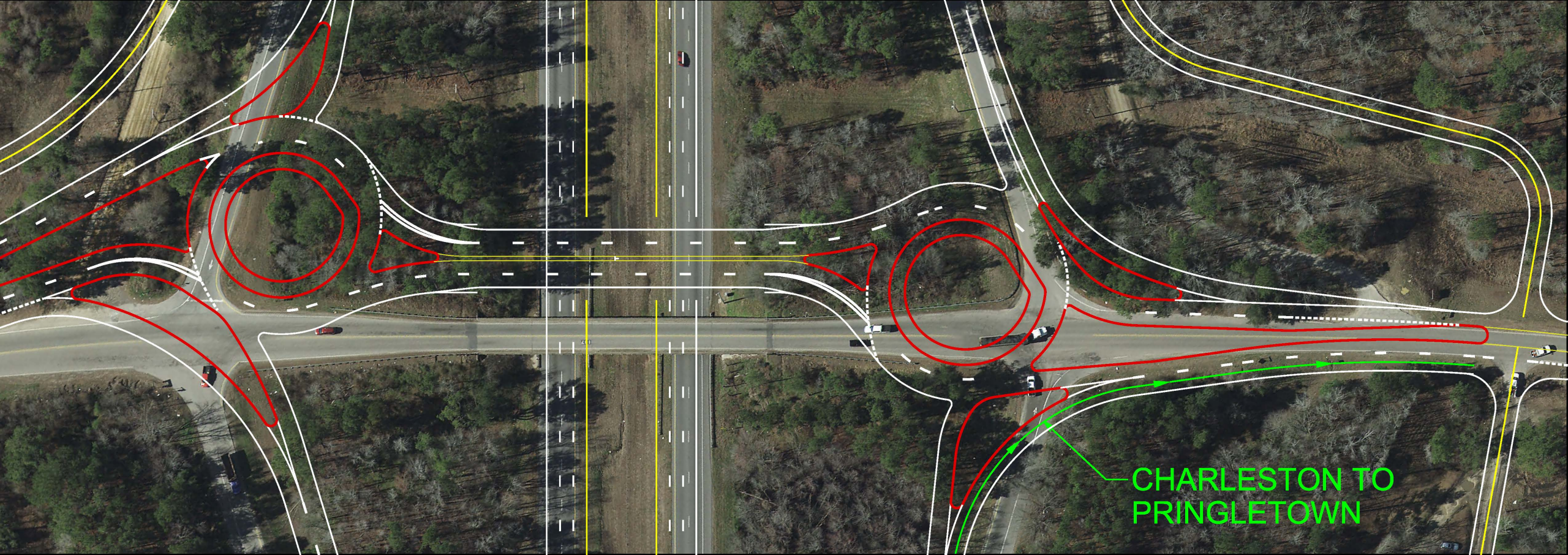




Charleston to Ridgeville

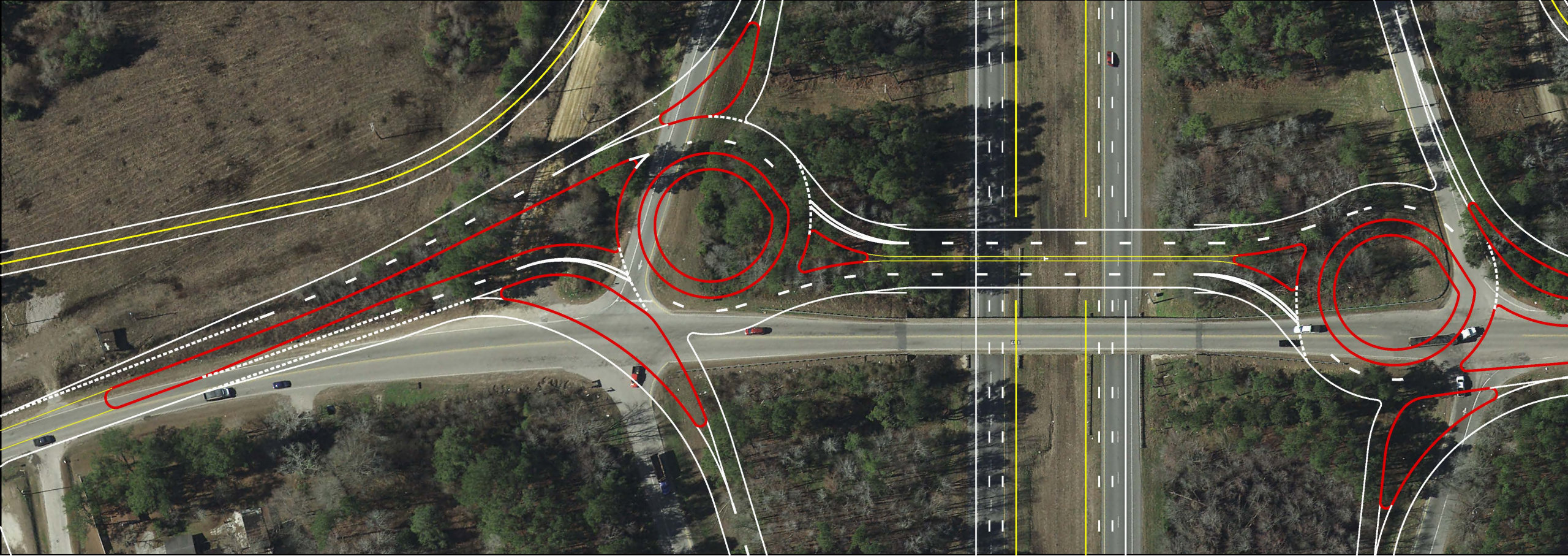
Roundabout Movements





Charleston to Pringletown

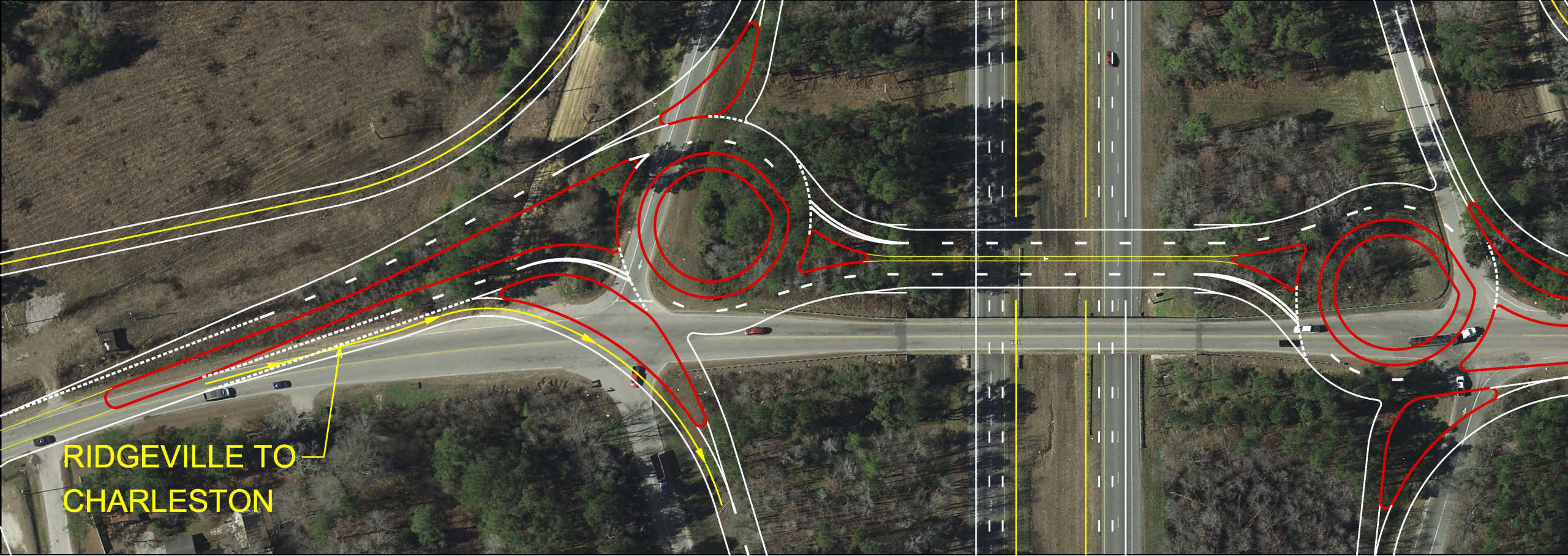
Roundabout Movements



SC 27 and I-26 Travel Patterns

Roundabout Movements



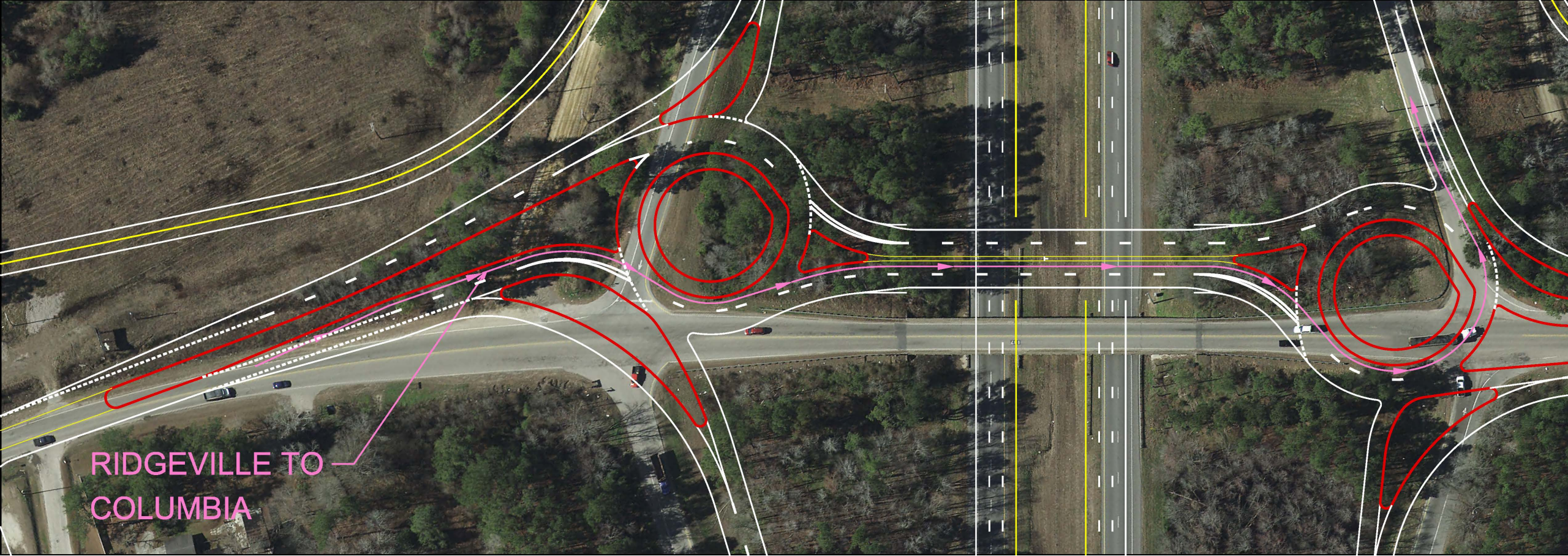


RIDGEVILLE TO
CHARLESTON

Ridgeville to Charleston

Roundabout Movements



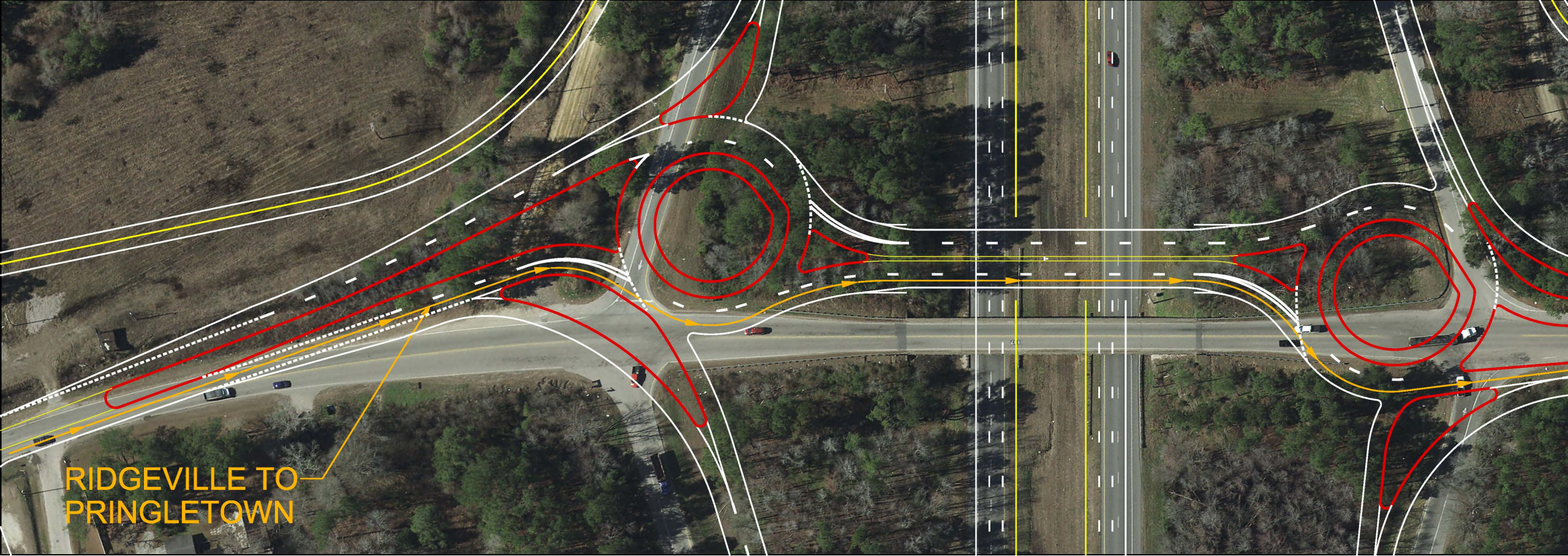


RIDGEVILLE TO
COLUMBIA

Ridgeville to Columbia

Roundabout Movements





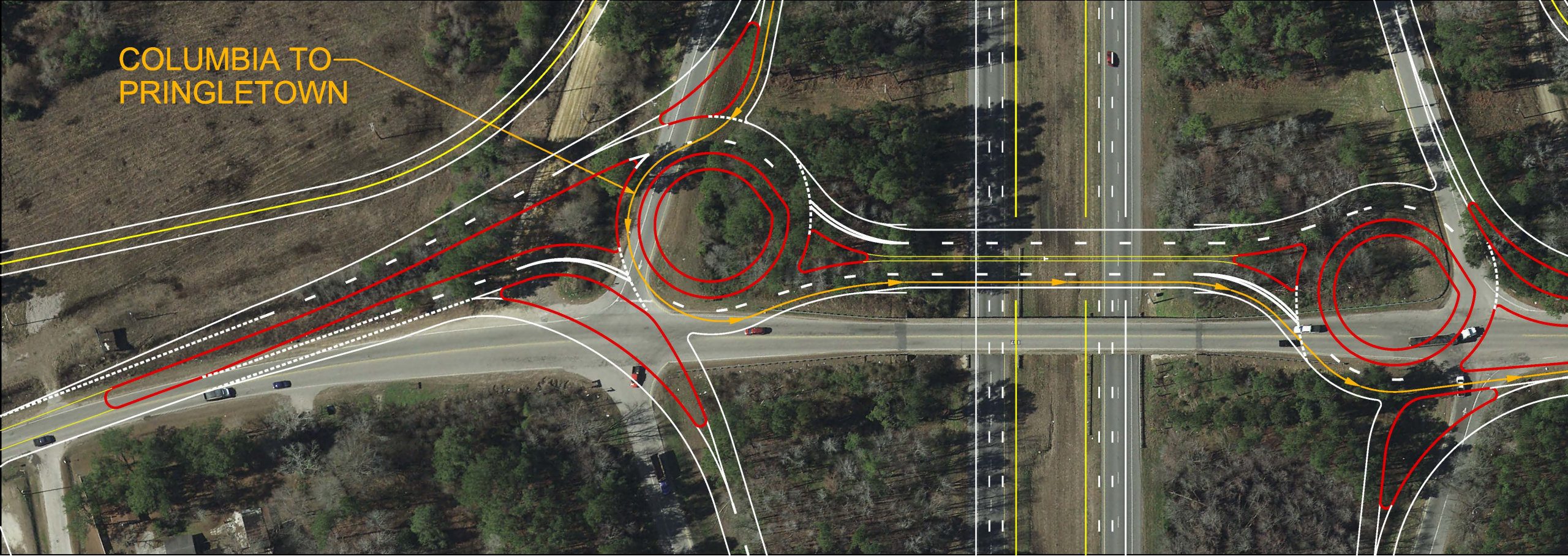
RIDGEVILLE TO
PRINGLETOWN

Ridgeville to Pringletown

Roundabout Movements



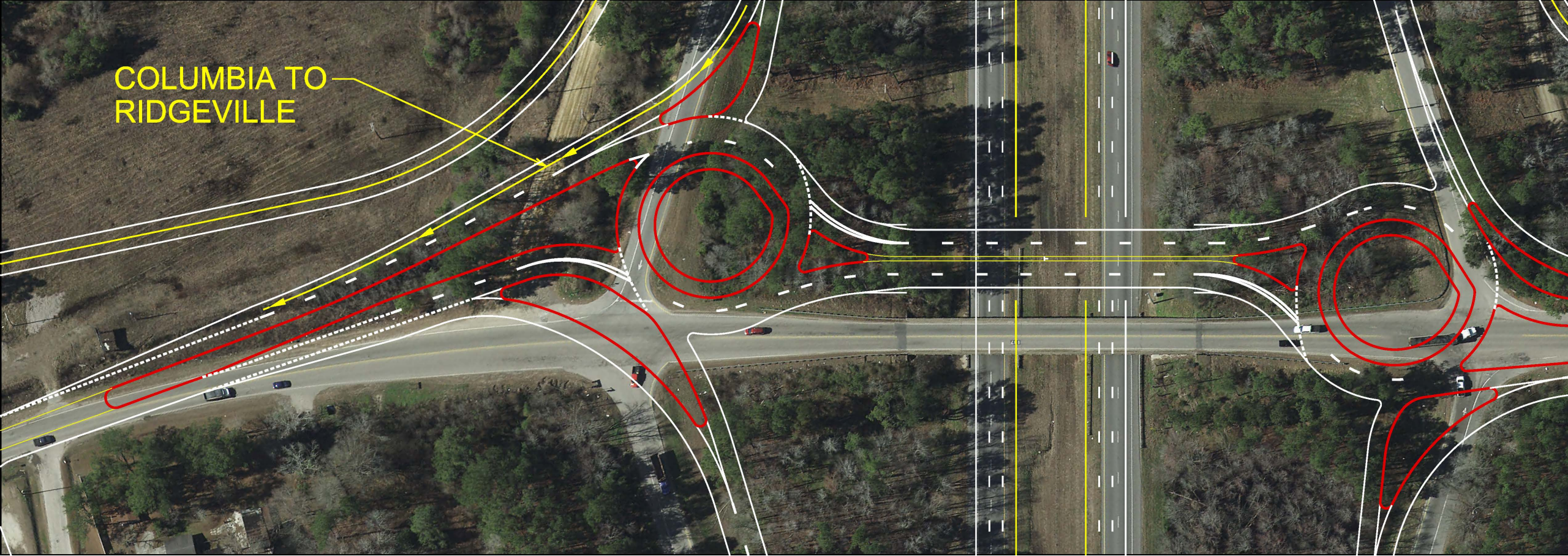
COLUMBIA TO
PRINGLETOWN



Columbia to Pringletown

Roundabout Movements





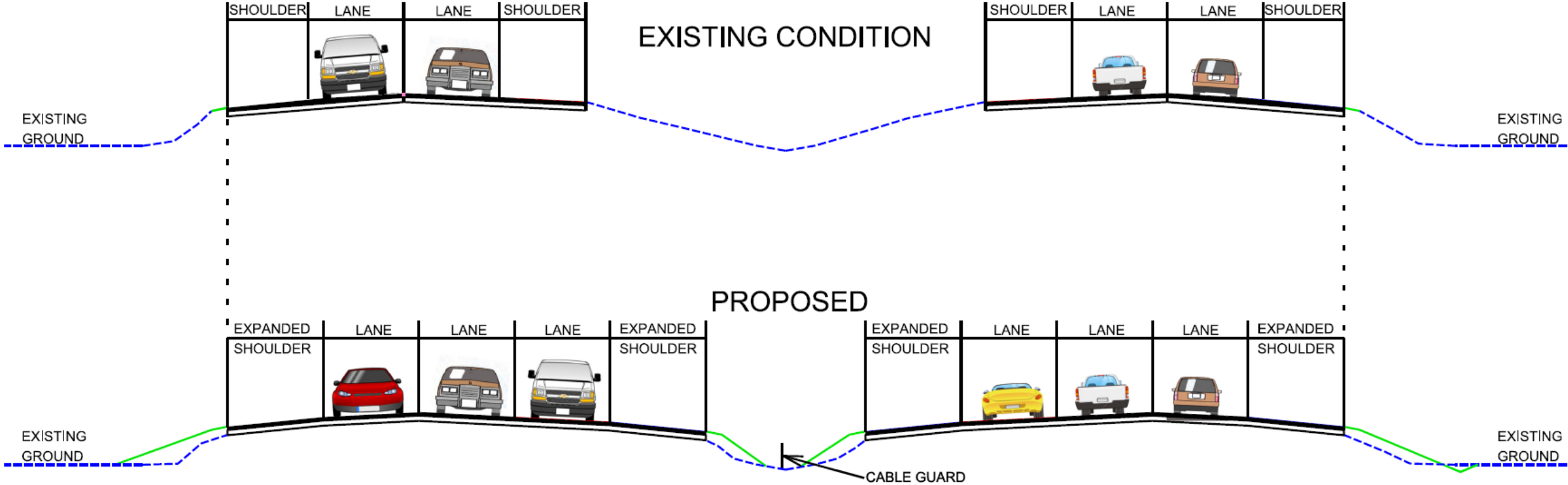
COLUMBIA TO
RIDGEVILLE

Columbia to Ridgeville

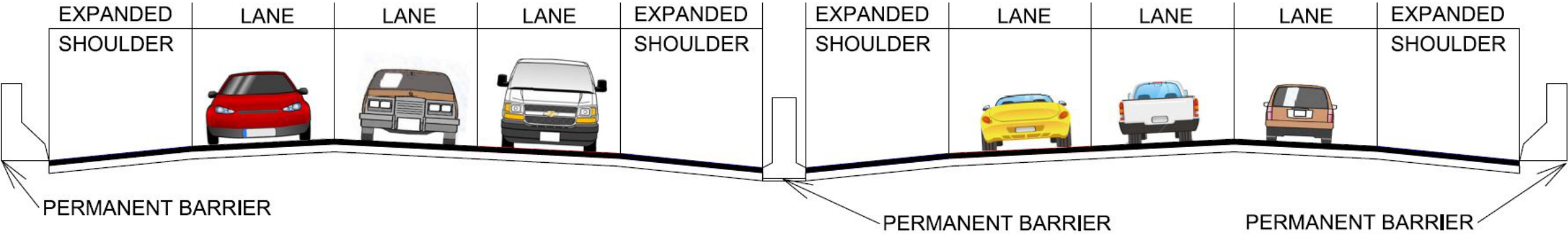
Roundabout Movements



Typical Sections – Interstate 26



Typical Sections – Bridge Section



The NEPA Process ▶▶▶





Your input matters –
Comment period open until November 22, 2019